



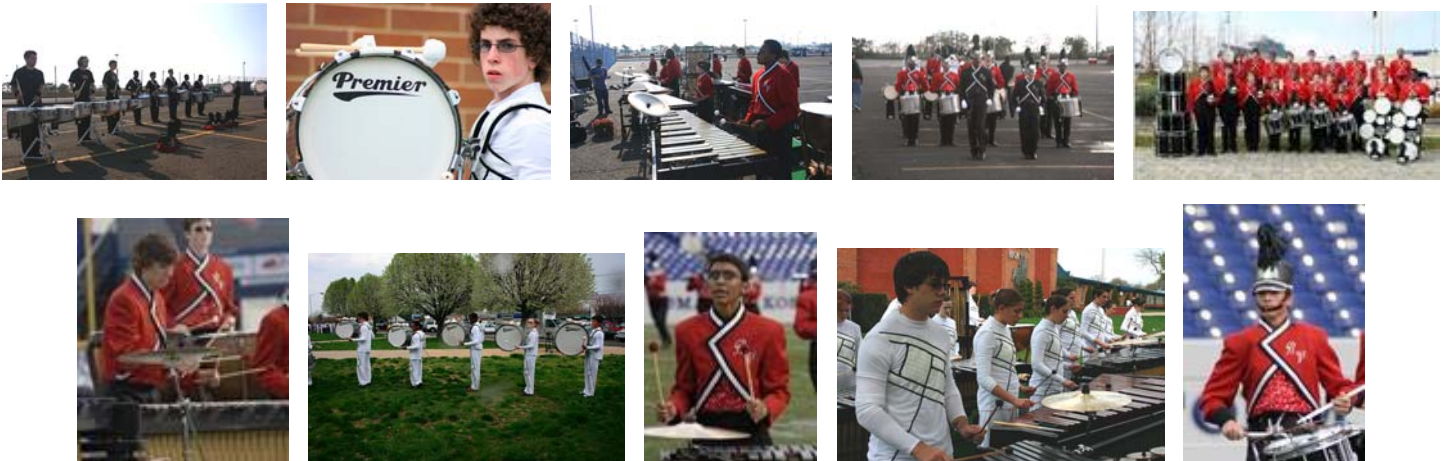
2009 RED DEVIL MARCHING BAND



DRUMLINE & FRONT ENSEMBLE PERCUSSION

OFF-SEASON TRAINING PROGRAM

For ALL New & Current Members



Continuing the Tradition of Excellence!

NOW is the time to get an early start on the 2009 Season!
WEEKLY PRACTICES* BEGIN WEDNESDAY, FEBRUARY 25th

7:00-9:00pm in the RV BAND ROOM
Parents are invited on 2/25 for more information.

** Weekly practices will alternate with drumline & front ensemble every other Wednesday.*

HEY 8th GRADERS!!!
Didn't sign up for band next year? **It's OK!**
Come anyway and check it out.

***We want players of ALL levels
beginner, intermediate or advanced
who LOVE to play!!!
BRING YOUR STICKS!***

Questions? E-mail Mr. Britton at
Red_devil_band2k3@yahoo.com
Visit us at www.rvband.com

BRING A FRIEND
It's more fun if you bring someone you know!
Do you or someone you know play PIANO?
We could use your help!
C'mon on out!